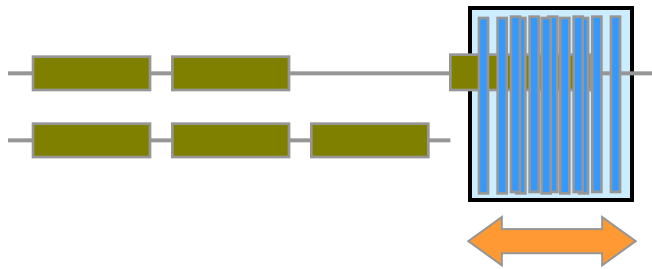
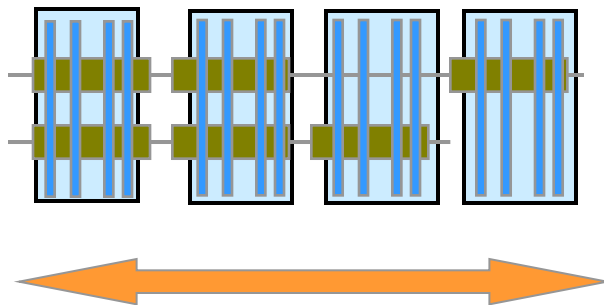


Affematrix probe設計原理

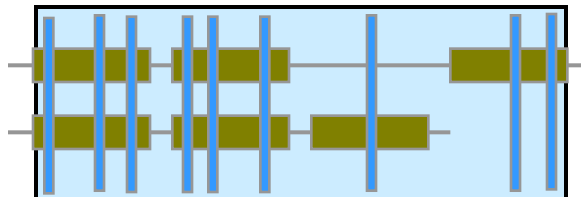
Expression Array Designs



3' Biased Probeset
HG-U133; 3' IVT assay

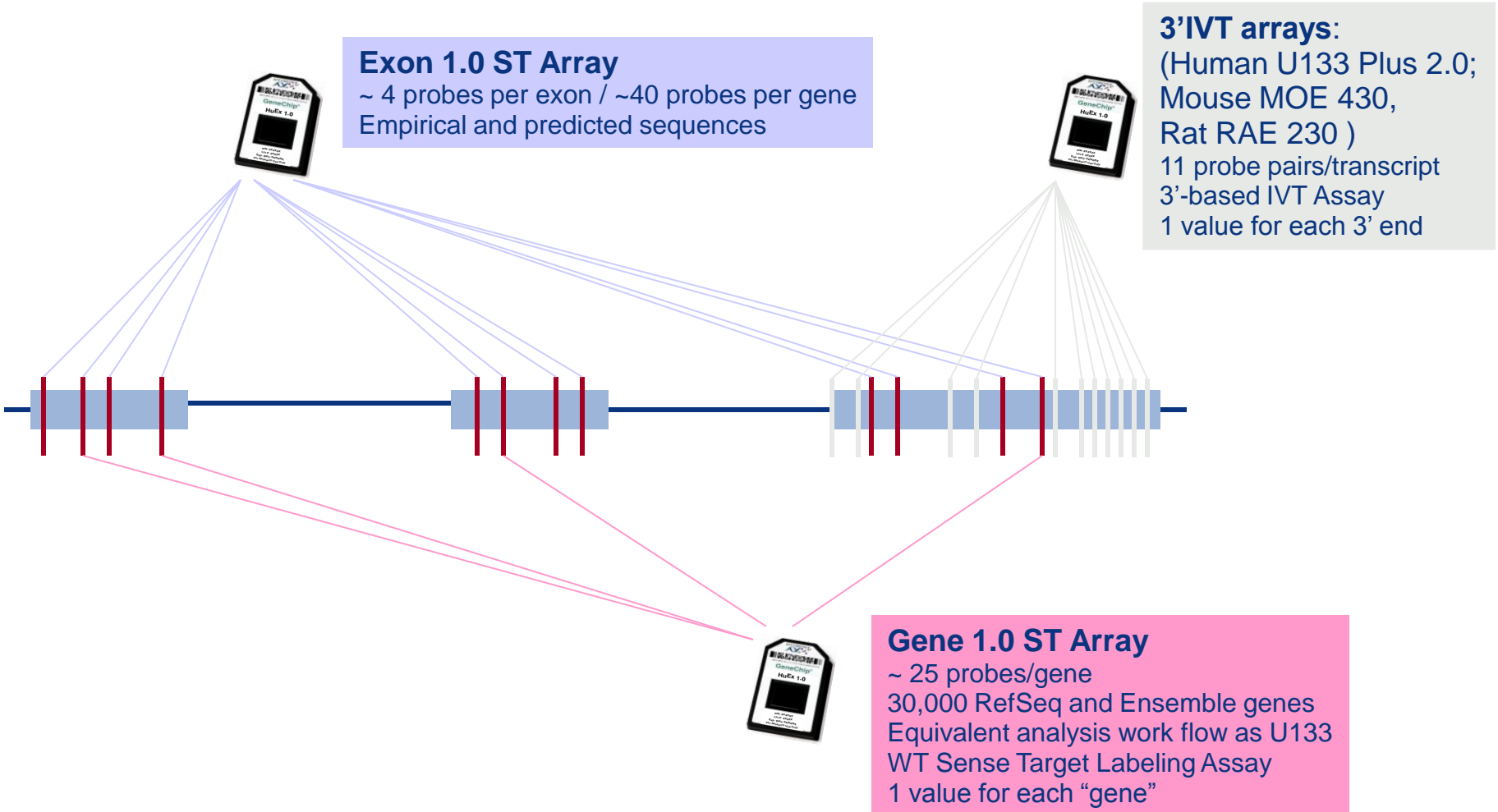


Exon Probeset
Human Exon 1.0 ST; WT assay



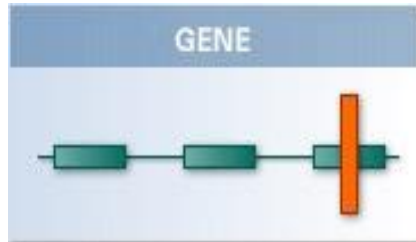
Gene Sampling Probeset
Human Gene 1.0 ST; WT assay

Expression Array Portfolio



GeneChip® Expression Product Line

3' Expression Arrays

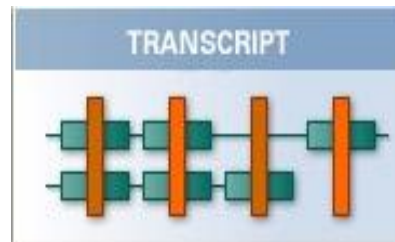


- **3' Expression Arrays: the industry standard transcript level analysis**

Questions:

- **What are the differences in transcription level?**

Gene Array

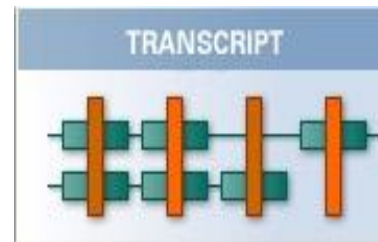


- **Gene Array**
Newest generation expression array. More sensitive and robust than 3'IVT design

Questions:

- **What are the differences in transcription level?**

Exon Arrays

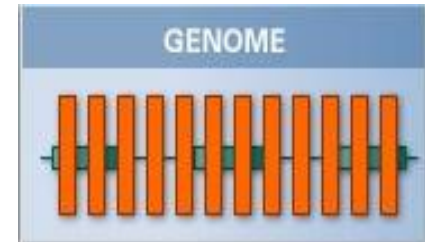


- **detailed view of expression**

Questions:

- **What are the differences in transcription at the exon level**
- **What are the differences in transcription level?**

Tiling Arrays



- **GeneChip® Tiling Arrays are the most unbiased arrays for mapping novel transcripts or protein/DNA interactions**

Questions:

- **Where do transcription factors bind to DNA?**
- **Where does transcription occur in the genome?**